

Vulnerable

vul · ner · a · ble (adjective)

1. Capable of being physically or emotionally wounded.

Our watershed is vulnerable to pollution from many sources. (nonpoint source pollution)

2. Open to attack or damage.

Our watershed is vulnerable to damage every time activities disturb the land or water.

3. Liable to increased penalties but entitled to increased bonuses.

Our watershed is vulnerable to the negative or positive consequences of our everyday habits.

What is a Watershed?

A watershed is the land area that drains water to a particular stream, river, or lake. Watersheds come in all shapes and sizes. Some are millions of square miles; others are just a few acres. Just as creeks drain into rivers, watersheds are nearly always part of a larger watershed.

You are sitting in a watershed now.

What is Nonpoint Source Pollution?

Nonpoint source (NPS) pollution occurs when rainfall or snowmelt runoff moves across the ground, carrying pollutants from multiple sources into streams, rivers, lakes and groundwater.

NPS Pollutants include:

- Excessive use of: fertilizers ♦ herbicides ♦ insecticides
- Sediment from: homesites ♦ eroding stream banks ♦ agricultural land
- Bacteria from: livestock ♦ pet waste ♦ faulty septic systems
- Improper disposal of: auto fluids ♦ tires ♦ household chemicals ♦ cooking oil
- Littering: cigarette butts ♦ fast food containers ♦ bait cups

This home is watershed unfriendly.

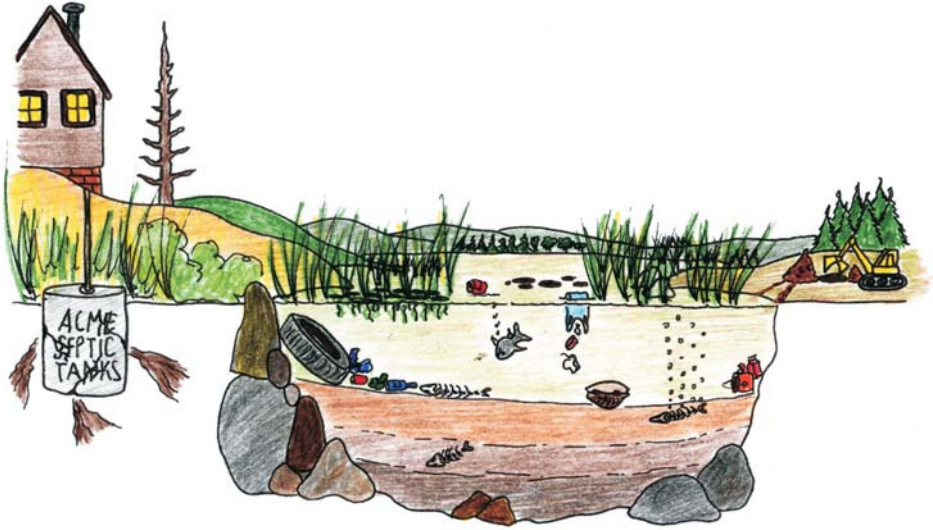
Can you find nine things wrong in this picture?



1. Cooking oil down the drain
2. Washing car in driveway
3. Pet waste
4. Yard waste in gutter
5. No trees
6. Auto oil leak
7. Excessive fertilizer
8. Cigarette butts
9. Overflowing trash

This is a vulnerable lake.

Can you find nine things wrong in this picture?



1. Sediment in lake
2. Tire in water
3. Dead fish and turtles
4. Leaking septic tank
5. Excessive plants and algae
6. Oil slick
7. Trash
8. Construction too close to lake
9. Dead trees

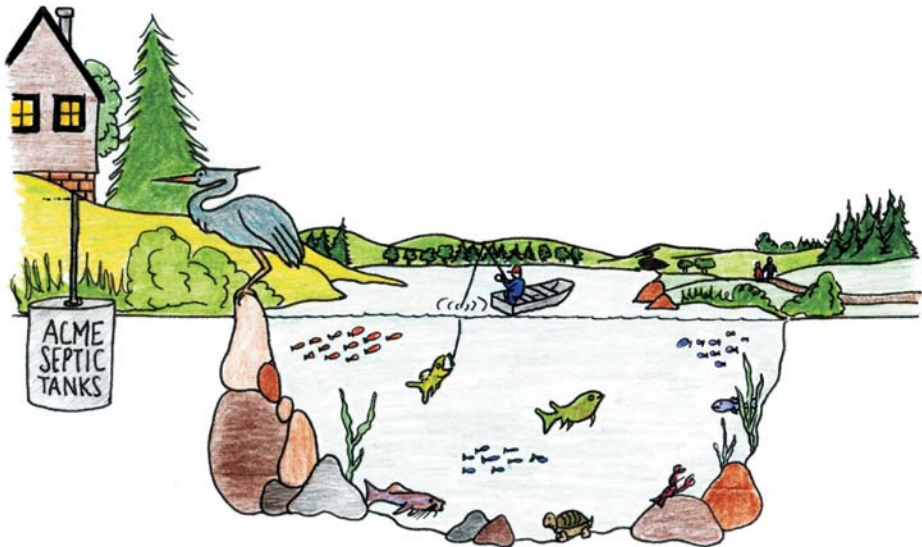
This home is watershed friendly.



Solutions That Make A Difference

1. Dispose of cooking oil in a can
2. Clean car at carwash
3. Dispose of pet waste in trash
4. Compost leaves
5. Grow trees
6. Routine car maintenance
7. Use fertilizer sparingly
8. Dispose of cigarette butts properly
9. Use trash cans and recycle bins

Signs of a healthy lake and watershed.



1. Deep lake without sediment
2. No tires
3. Abundant fish and aquatic life
4. Well maintained septic systems
5. Balanced plant life
6. No oil slicks
7. No trash
8. Recreational activities
9. Live trees



Lake Fayetteville Watershed Partnership

We are a nonprofit group of volunteers who believe that Lake Fayetteville is vulnerable to the wide variety of nonpoint source pollutants impacting our water quality.

Our Mission Statement

To promote, preserve and enhance the integrity of the Lake Fayetteville watershed through scientific evaluation, educational programs, and voluntary cooperation.

Websites to learn more!

Lake Fayetteville Watershed Partnership – www.lfwp.org

Arkansas Department of Environmental Quality – www.adeq.state.ar.us

Arkansas Natural Resources Commission – www.anrc.ar.gov

Arkansas Watershed Advisory Group – www.awag.org

U.S. Environmental Protection Agency – www.epa.gov/nps

Illinois River Watershed Partnership – www.irwp.org

Center for Watershed Protection – www.cwp.org

Fun websites for kids!

EcoKids – www.ecokids.ca

Watersheds.org – www.watersheds.org

U.S. EPA for Kids – www.epa.gov/safewater/kids

Groundwater Foundation – www.groundwater.org/kc/kc.html

Did you know?

- ◆ Lake Fayetteville Watershed is located in the cities of Fayetteville and Springdale, encompassing approximately 10 square miles.
- ◆ Lake Fayetteville Watershed is a sub-watershed of the Illinois River Watershed, which originates in Arkansas and flows into Oklahoma, encompassing approximately 1700 square miles.
- ◆ The Lake Fayetteville Environmental Study Center is a joint project of the Fayetteville and Springdale school districts and provides watershed education.
- ◆ The Lake Fayetteville Watershed Partnership holds lake cleanups in the Spring and Fall. Volunteers are always welcome to help.
- ◆ The Botanical Garden Society of the Ozarks is located on the southeast side of the lake. Visit their website at www.bgsso.org.
- ◆ Recreational opportunities include fishing*, canoeing*, kayaking*, hiking and biking trails, bird watching, volleyball and disk golf.
- ◆ Lake Fayetteville was the host site for “Solar Splash”, the championship of intercollegiate solar boating. Visit their website at www.solarsplash.com.

*(permits required - inquire at marina office)

This brochure was funded by the U.S. Environmental Protection Agency under a Clean Water Act 319(h) grant through the Arkansas Natural Resources Commission.

How can you make a difference?

Name _____

Address _____

City _____

State _____ Zip _____

Telephone _____

Email _____

I am interested in...

- Becoming a member of LFWP
- Helping with lake cleanup events
- Receiving a copy of the booklet "Urban Home*A*Syst"
to learn what I can do to protect my watershed



From:

Postage
Required

Lake Fayetteville Watershed Partnership
P.O. Box 9943
Fayetteville, AR 72703